



ADHESIVES  
SEALANTS  
PU FOAMS  
COATINGS





**PROLOC**, BEING PREFERRED BY THOUSANDS OF PROFESSIONALS IN BUILDING AND CONSTRUCTION ACTIVITIES, IS STRENGTHENING ITS POSITION IN ITS MARKET DAY BY DAY. IT IS OFFERING USEFUL SOLUTIONS FOR SUITABLE FIELDS IN POLYURETHANE FOAMS, ADHESIVES, SEALING AND INSULATING MATERIALS LEAGUE.

ALL **PROLOC** PRODUCTS ARE MANUFACTURED IN THE FACILITIES CERTIFIED WITH THE ISO QUALITY MANAGEMENT SYSTEM.



WWW.**PROLOC**.COM.TR  
INFO@**PROLOC**.COM.TR

## ADHESIVES 02-09

- P.42 | EXPRESS PU MONTAGE ADHESIVE
- P.41 | ACRYLIC MONTAGE KIT
- P.44 | PROFESSIONAL FAST ADHESIVE
- P.67 | PU FAST WOOD GLUE (EXPRESS)
- P.46 | PU WOOD ADHESIVE MARINE ADHESIVE
- P.47 | HEAVY DUTY PU MARINE ADHESIVE
- P.48 | CONTACT ADHESIVE
- P.52 | PVC ADHESIVE
- P.53 | PVC ADHESIVE
- P.55 | PU WINDSHIELD ADHESIVE
- P.56 | WATERPROOF EPOXY
- P.57 | QUICK SETTING EPOXY
- P.58 | STEEL EPOXY
- P.59 | WALLPAPER ADHESIVE (SPECIAL)
- P.39 | EPDM ADHESIVE
- D2 | WHITE GLUE FAST WOOD ADHESIVE
- D3 | SUPER WOOD GLUE
- P.86 | CHEMICAL ANCHOR POLYESTER
- P.90 | CHEMICAL ANCHOR EPOXY
- P.73 | HOT MELT ADHESIVE (11 MM)
- P.122 | SUPER GLUE
- P.123 | SUPER GLUE

## SEALANTS 10-18

- P.22 | UNIVERSAL SILICONE
- P.24 | 100% SILICONE
- P.26 | MIRROR ADHESIVE
- P.28 | AQUARIUM SILICONE
- P.30 | GASKET MAKER
- P.32 | NEUTRAL SILICONE
- P.33S | IG SILICONE SEALANT
- P.35 | PU SEALANT CONSTRUCTION
- P.36 | ACRYLIC SEALANT
- P.37 | SILICONIZED ACRYLIC SEALANT
- P.38 | BITUMEN SEALANT
- P.45 | PU SEALANT AUTOMOTIVE
- P.49 | PU SEALANT FAST CURE
- P.50 | HYBRID SEALANT AUTOMOTIVE
- P.60 | FLEXIBLE HYBRID POLYMER
- P.61 | CLEAR HYBRID POLYMER
- P.62 | MULTI PURPOSE HYBRID POLYMER
- P.63 | HIGH TACK
- P.64 | POWER HYBRID POLYMER
- P.66 | DECK CAULK HYBRID POLYMER
- P.72 | LMN SILICONE
- P.82 | FIRE STOP ACRYLIC SEALANT
- P.84 | POLYURETHANE SEALANT CONSTRUCTION
- P.85 | BUTYL SEALANT



# CONTENTS

## PU FOAMS 19-25

- P.10 | MULTI PURPOSE PU FOAM
- P.11 | MULTI PURPOSE PU FOAM (-12°C)
- P.12 | MULTI PURPOSE PU GUN FOAM
- P.13 | MULTIPURPOSE PU GUN FOAM (-12°C)
- P.14 | MEGA PU GUN FOAM 70L
- P.15 | MEGA PU GUN FOAM 70L (-12°C)
- P.16 | MEGA PU GUN FOAM 70L (-25°C)
- P.18 | PU ADHESIVE GUN FOAM
- P.110 | INSULATION SPRAY FOAM
- P.19 | SAFETY VALVE PU FOAM
- P.20 | B1 FIRE RATED STRAW PU FOAM
- P.20P | B1 FIRE RATED PU GUN FOAM
- P.21 | B2 FIRE RATED STRAW PU FOAM
- P.21P | B2 FIRE RATED PU GUN FOAM
- P.102 | DOOR & WINDOW PU FOAM
- P.05 | FOAM CLEANER
- P.104P | ADHESIVE FAST FOAM
- P.17 | PU ADHESIVE FOAM (STRAW)

## COATINGS 26-28

- PP90 | 1K POLYURETHANE PRIMER
- PM450 | POLYURETHANE WATERPROOFING MEMBRANE
- JH1080 | 2K JOINT SEALANT POLYUREA
- ACRYLIC | WATERPROOFING MEMBRANE
- HYBRID | WATERPROOFING MEMBRANE
- HM80 | HAND MIX POLYUREA



[WWW.PROLOC.COM.TR](http://WWW.PROLOC.COM.TR)



## P.42 | EXPRESS PU MONTAGE ADHESIVE



- Quick drying montage adhesive that is designed to used to bond all common building materials.

### PROPERTIES

Fast curing. Low press time. Transparent. Extremely high bond strength on numerous substrates. Thixotropic, non-sag, ideal for vertical joints. Low consumption, economical. Good filling properties. Conforms to D4 according to DIN EN 204. Easy to use. Very good resistance to chemicals. Excellent resistance to moisture and weather conditions. Nonshrinking. Low odour. Usable in slightly wet substrates.

### APPLICATIONS

It is suitable for use in construction and repair applications where a permanent strong bond is required between porous-porous and porous-nonporous surfaces. It can be used for bonding to various kinds of construction materials such as wood, MDF, concrete, metal, polystyrene and polyurethane foam, marble, granite and ceramic etc.



### PACKAGE

Volume	310
Box	12

## P.41 | ACRYLIC MONTAGE KIT



- Water-based adhesive used for bonding numerous building materials. It is particularly suitable for DIY users due to solvent-free content and high bonding strength.

### PROPERTIES

Acrylic dispersion based. Good gap-filling capacity on rough surfaces. Suitable for both indoor and outdoor applications. Weatherproof. Over paintable. Low odour. Solvent-free.

### APPLICATIONS

Bonding materials such as wood, non-polished stones, concrete, plaster, tiles, panels, synthetic building materials etc. Mounting wooden construction elements, wood and plaster panels, plaster ornaments. Mounting decorative wooden trimmings. Repairing cracks in plaster. Quick repairs on walls and plaster. Suitable surfaces: MDF, Particleboard, Wood, Polystyrene foam, Concrete, Masonry, Tile, Ceramic, Stone, Plasterboard.



### PACKAGE

Volume	310
Box	12

## P.44 | PROFESSIONAL FAST ADHESIVE



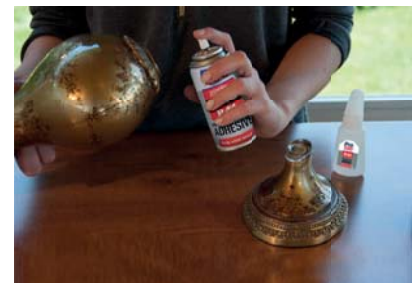
- An adhesive set which consists of high viscosity cyanoacrylate adhesive and activator.

### PROPERTIES

High bonding strength. Suitable for use on vertical surfaces as it will not drip or slump. It is particularly suited to bonding difficult substrates which have a porous or uneven nature since it increases bonding strength by preventing the adhesive to be absorbed by the surface.

### APPLICATIONS

It is suitable for the bonding of a very wide range of materials, including acidic surfaces and some porous ones, where rapid bonding times are required. Suitable for MDF, wood, chip wood, rubber, most plastics, leather and other common substrates. Especially suitable for the applications where cure speed needs to be accelerated. Although has a degree of gap filling ability, it is generally recommended for use on close-fitting parts and fairly smooth, even surfaces.



### PACKAGE

Volume	Box	Volume	Box
200 ml+ Gw. 65gr	24	250 ml+ Gw. 65gr	24
400 ml+ Gw. 125gr	24	500 ml+ Gw. 125gr	24
400 ml+ Gw. 100gr	24	100 ml+25gr	48
200 ml+ Gw. 50gr	24	100 ml+25gr	24

## P.67 | PU FAST WOOD GLUE (EXPRESS)



- ☑ A quick drying polyurethane wood glue with high water resistance and bonding strength.

### PROPERTIES

Fast curing. Low press time. Transparent. Extremely high bond strength on numerous substrates. Conforms to D4 according to DIN EN 204. Easy to use. Very good resistance to chemicals. Excellent resistance to moisture and weather conditions. Nonshrinking. Low odour. Useable in slightly wet substrates.

### APPLICATIONS

Fixing and gluing wooden elements to other various porous and non-porous elements as wood, metal, concrete, polystyrene foam etc. Furniture and boat production. All bonding applications that need a high water resistance.



### PACKAGE

Volume	Box	Volume	Box
Gw. 150 gr.	48	Gw. 750 gr.	12
Gw. 250 gr.	24	Gw. 800 gr.	12
Gw. 500 gr.	12	Gw. 1000 gr.	12
Gw. 560 gr.	12	Net 25 kg	1

## P.46 | PU WOOD ADHESIVE MARINE ADHESIVE



- ☑ One-component, fast curing liquid polyurethane adhesive. It possesses high water resistance and bonding strength.

### PROPERTIES

Easy application, low viscosity. High bond strength. Water resistant (D4-DIN EN204). Can be used on slightly humid surfaces. Resistant to temperature extremes. Resistant to moisture and chemicals.

### APPLICATIONS

Fixing and gluing wooden elements to other various porous and non-porous elements as wood, metal, concrete, polystyrene foam etc. Furniture and boat production. All bonding applications that need a high water resistance.



### PACKAGE

Volume	Box	Volume	Box
Gw. 150 gr.	48	Gw. 750 gr.	12
Gw. 250 gr.	24	Gw. 800 gr.	12
Gw. 500 gr.	12	Gw. 1000 gr.	12
Gw. 560 gr.	12	Net 25 kg	1

## P.47 | HEAVY DUTY PU MARINE ADHESIVE



- ☑ A one component high viscosity polyurethane based adhesive specially designed to provide marine grade quality for current industry needs. It can be also used in furniture industry DIY projects where you need premium quality. Unlike common polyurethane adhesives, it does not foam up uncontrollably.

### PROPERTIES

Water-resistant and weatherproof: Withstand temperature and seasonal changes and suitable for both interior and exterior applications. Retards fire. Low-foam. High adhesion strength. Suitable for wood based materials, metals, natural stones, ceramic, rubber etc. Can be sanded and painted after curing. High viscosity: Easier to use on vertical surfaces compared to standart liquid adhesives. Long open time: gives sufficient working time.

### APPLICATIONS

Fixing and gluing wooden elements to other various porous and non-porous elements as wood, metal, concrete, polystyrene foam etc. Furniture and boat production. All bonding applications that need a high water resistance and fire retardant properties.



### PACKAGE

Volume	800 gr
Box	12

## P.48 | CONTACT ADHESIVE



Fast curing, high strength adhesive. It is mainly used in upholstery, shoe and textile industry for bonding of the most common materials.

### PROPERTIES

Rapid Curing. Provides flexible bond. Good frost resistance. Moisture resistant.

### APPLICATIONS

It is mainly used in upholstery, shoe and textile industry for bonding of the most common materials such as; Rubber. Fabric. Leather. Artificial Leather. Cork. Metal. Chipboard etc. To itself or to several other substrates.



### PACKAGE

Volume	50 ml	Br. 500 g.	750 ml Net 608 gr
Box	240	24	24

## P.52 | PVC ADHESIVE



THF  
FREE

CE  
EN 14814

Special solvent cement for joining rigid PVC pipes and accessories pressure systems, according to BS EN 14814 and BS EN 14680. Adhesive with CE Marking for thermoplastic piping systems for fluids under pressure (PN16). Designed also to be used in non-pressure systems such as PVC and ABS.

### PROPERTIES

Very high initial setting speed. High resin content gives a good filling capacity in diametrical gaps. Gel consistency and excellent fluidity. High thixotropy index – prevents it from dripping upon application. Acts as a real chemical welding system for PVC, due to its composition. Easy to apply; it does not run or form "tears" inside the fixed pipes.

### APPLICATIONS

Specifically indicated for:  
Bonding cement PVC-U pipes and accessories in pressure systems up to 16 PN according to BS EN 14814. Bonding pipes and accessories in waste systems according to the following standards:  
PVC-U plastics piping systems for soil and waste discharge (low and high temperature) BS EN 1329.  
ABS plastics piping systems for soil and waste discharge (low and high temperature) BS EN 1455.  
PVC-C plastics piping systems for soil and waste discharge (low and high temperature) BS EN 1566.



### PACKAGE

Volume	Box	Volume	Box
Net. 50 g.	25	500 ml.	12
125 ml.	50	1000 ml.	12
250 ml.	24		

## P.53 | PVC ADHESIVE



Special solvent cement for joining rigid PVC pipes and accessories pressure systems, according to BS EN 14814 and BS EN 14680. Adhesive with CE Marking for thermoplastic piping systems for fluids under pressure (PN16). Designed also to be used in non-pressure systems such as PVC and ABS.

### PROPERTIES

High pressure resistance (16 bars). Water Resistant. Chemical Resistant especially to inorganic acids. Fast curing, maximum leak protection. Excellent gap-filling properties. Easy bonding even on large surfaces. Hot and cold water pipes (60°C). Resistant to bacteria. The products conforms to following standards; DIN 16970, BS 4346, ASTM-D 2564, NEN 7106

### APPLICATIONS

Specifically indicated for:  
Bonding cement PVC-U pipes and accessories in pressure systems up to 16 PN according to BS EN 14814. Bonding pipes and accessories in waste systems according to the following standards:  
PVC-U plastics piping systems for soil and waste discharge (low and high temperature) BS EN 1329.  
ABS plastics piping systems for soil and waste discharge (low and high temperature) BS EN 1455.  
PVC-C plastics piping systems for soil and waste discharge (low and high temperature) BS EN 1566.



### PACKAGE

Volume	Box	Volume	Box
Net. 50 g.	25	500 ml.	12
125 ml.	50	1000 ml.	12
250 ml.	24		



## P.55 | PU WINDSHIELD ADHESIVE



- One component, moisture curing polyurethane based adhesive for direct glazing in AUTOMOTIVE GLASS REPLACEMENT.

### PROPERTIES

One component formulation. Good non-sag properties. Short cut-off string. Cold application. Fast curing – Rapid strength development. High mechanical performance. High Modulus. High initial bond strength. Can be overpainted.

### APPLICATIONS

It is especially useful in bonding windshield glass into automotive frames.



### PACKAGE

Volume	290 ml	600 ml
Box	12	20

## P.56 | WATERPROOF EPOXY



- Two-component waterproof epoxy adhesive.

### PROPERTIES

High lap shear strength and durability. Applied and cured under water. Cures without shrinkage and crack. Good gap filling capability. Water and chemical resistant. Paintable and sandable,

### APPLICATIONS

Bonding for wood, glass, crystal, ceramic, porcelain, metal, fiberglass. Repairing furniture and household materials.



### PACKAGE

Volume	25 ml (29 gr.)
Box	12

## P.57 | QUICK SETTING EPOXY



- Fast cure two-component adhesive based on epoxy.

### PROPERTIES

High lap shear strength and durability. Very fast cure. Cures without shrinkage and crack. Good gap filling capability. Water and chemical resistant. Paintable and sandable,

### APPLICATIONS

Bonding for wood, glass, crystal, ceramic, porcelain, marble metal, fiberglass, leather, rubber, fabric and rigid plastic substrates. Sealing electrical components. Repairing furniture and house materials.



### PACKAGE

Volume	25 ml (29 gr.)
Box	12



## P.58 | STEEL EPOXY



✓ Versatile, highly durable and very strong epoxy adhesive. Easy to apply, fast cure and excellent adhesion strength in 5 minutes. Because of its gap filling capability, it can also be used on rough and incompatible surfaces.

### PROPERTIES

Very fast cure. Cures without shrinkage and crack. Good gap filling capability. Machinable. Water and chemical resistant. Paintable and sandable.

### APPLICATIONS

Bonding for metal, concrete, wood, glass and ceramic. Use for repairing machinery, appliances, tools, automotive components, pipes. Imbedding bolts and screws into metals, concrete or stone. Sealing electrical components,



### PACKAGE

Volume	25 ml (29 gr.)	57gr
Box	12	48

## P.59 | WALLPAPER ADHESIVE (SPECIAL)



✓ A wallpaper adhesive based on cold water dispersible starch and cellulose derivatives.

### PROPERTIES

Easy to apply. Allows time for positioning. Makes future removal quick and easy. Dissolves in water with ease. Can be cleaned with a sponge and water.

### APPLICATIONS

Sticking wallpapers, pre-pasted borders, posters, placards etc.



### PACKAGE

Volume	250gr	300gr	500gr	25kg
Box	24	18	12	1

## P.39 | EPDM ADHESIVE



✓ A special neutral silicone sealant, designed for a weatherproof adhesion of EPDM sheets to most common building materials. Thanks to its formulation, no weather condition can affect it after full cure.

### PROPERTIES

Perfect way of bonding EPDM sheets to many porous or nonporous building materials. Water resistant, Colorfast and UV resistant, Very low odor and noncorrosive Resistant to temperature extremes (-60 °C to +180 °C). Fast curing, high elasticity. High viscosity non slump formula.

### APPLICATIONS

Bonding of EPDM sheets to each other. Sealing between EPDM sheets and many different building surfaces.



### PACKAGE

Volume	310 ml
Box	12

## D2 | WHITE GLUE FAST WOOD ADHESIVE



✓ PVA based wood glue with slight water resistance which gets transparent when cured.

### ⚙️ PROPERTIES

Fast curing. Low press time. Resistant to water according to D2-DIN EN204. Extremely high bond strength on numerous substrates. Very good resistance to chemicals. Excellent resistance to moisture and weather conditions. Nonshrinking. Low odour.

### ⚙️ APPLICATIONS

It is suggested that the time of staying open shall be 3-4 minutes and pressure that will be applied shall be 1,8 kg/cm<sup>2</sup>. At the Cold-Press Machines and Manual Use the press time should be arranged accordingly with working temperature. Below you can find the relation with temperature and press time;

5 OC 65 minutes  
10 OC 60 minutes  
20 OC 55 minutes

D2 is designed to hold against low levels of moisture in the wood to maintain its high bonding power. While the acceptable moisture content is 8 - 12 % the press time can be needed to be increased slightly accordingly. Usable where high rate of moisture is a problem as dry films of D2 has potential to absorb water.



### ⚙️ PACKAGE

Volume	Box	Volume	Box
Gw. 150 gr.	48	Gw. 3 kg	4
Gw. 500 gr.	12	Gw. 10 kg	4
Gw. 1 kg	12	Gw. 30 kg	12

## D3 | SUPER WOOD GLUE



✓ Formulated cross-linking synthetic emulsion. Its fast setting and water resistance are suitable for rapid production and bond security even under damp conditions.

### ⚙️ PROPERTIES

Fast curing. Low press time. Extremely high bond strength on numerous substrates. Conforms to D3 according to DIN EN 204. Very good resistance to chemicals. Excellent resistance to moisture and weather conditions. Nonshrinking. Low odour.

### ⚙️ APPLICATIONS

D3 Adhesive can be used in lamination of HPL to wood based substrates and wood to wood when a good water resistance is required. D3 is vinyl acetate homopolymer dispersion with reactive groups with an acidic pH range. It is used to adhere all kinds of wooden pieces to each other, and used to adhere all kinds of laminate and plates to wooden pieces.



### ⚙️ PACKAGE

Volume	Box	Volume	Box
Gw. 150 gr.	48	Gw. 3 kg	4
Gw. 500 gr.	12	Gw. 10 kg	4
Gw. 1 kg	12	Gw. 30 kg	12

## P.86 | CHEMICAL ANCHOR POLYESTER



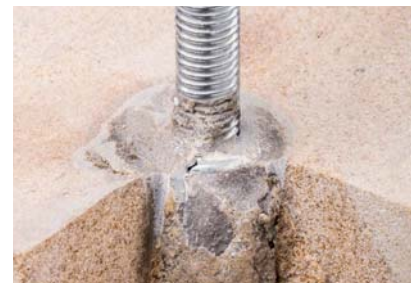
✓ Polyester injection mortar for general purpose for solid and hollow supports having a short cure time. It is suitable for use in concrete, perforated bricks and cavity blocks in a wide range of applications.

### ⚙️ PROPERTIES

Suitable for solid and hollow structures. High solid content. Easy to extrude and to inject. Thixotropic, can be applied in vertical and horizontal direction. Fast curing.

### ⚙️ APPLICATIONS

Low to Medium-load applications in solid and hollow supports. Fixing of; Gates, balustrades, roller blinds, panes, antennas, consoles, cable trays etc.



### ⚙️ PACKAGE

Volume	345 ml	300 ml
Box	12	12



## P.90 | CHEMICAL ANCHOR EPOXY



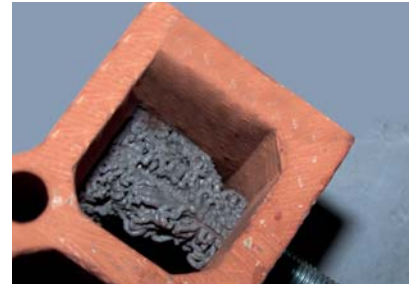
High performance styrene free epoxy acrylate injection mortar for solid and hollow supports having a short cure time. It is suitable for use in concrete, stone, perforated bricks and cavity blocks in a wide range of applications.

### PROPERTIES

Suitable for rods and reinforcing bars in plain and hollow structures. Styrene free and very low odour. Easy to extrude and to inject. Thixotropic, can be applied in vertical and horizontal direction.

### APPLICATIONS

Heavy load-carrying attachments in solid stone and concrete. Repair mortar or adhesive mortar for concrete components. Attachment of anchor rods, threaded collars, reinforcement bars, profiles etc. Medium-load applications in hollow-bricks. Fixing of: Wooden constructions, Metal constructions, Metal profiles, Sanitary fittings, Pipe connections, Projecting roofs, Facades, Cable trays, Railings, Staircases, Gates, Window elements.



### PACKAGE

Volume	345 ml	300 ml
Box	12	12

## P.73 | HOT MELT ADHESIVE



8 mm

11 mm

Translucent, high viscosity and slow setting general purpose glue stick.

### PROPERTIES

Designed for use on the paper, cloth and plastic related applications. Ideal for bonding wood, metal, fabric, ceramics, masonry, leather, cardboard. Appropriate when immediate bonding is required. Environmentally friendly. Gap-filling. High green strength. Non-sticky surfaces. Odourless. Easy to use.

### APPLICATIONS

Ideal for household repairs, DIY tasks, craft and hobby works.



### PACKAGE

Volume	1kg	1kg	300gr	300gr	1kg
Box	16	25	60	60	16

## P.122 | SUPER GLUE



Low viscosity superfast instant glue based on cyanoacrylate adhesive. It is excellent where extremely fast cure is required.

### PROPERTIES

Immediate bond. Very high bond strength after a few seconds.

### APPLICATIONS

Suitable for rubber, metals, porcelain, rubber, leather, wood, paper ceramic and many plastics.



### PACKAGE

Volume	25 gr
Box	50/500

## P.123 | SUPER GLUE



Low viscosity super fast instant glue based on cyanoacrylate adhesive. It is excellent where extremely fast cure is required.

### PROPERTIES

Immediate bond. Very high bond strength after a few seconds.

### APPLICATIONS

Suitable for rubber, metals, porcelain, rubber, leather, wood, paper ceramic and many plastics.



### PACKAGE

Volume	3 gr	3 gr
Box	12/288	1





[WWW.PROLOC.COM.TR](http://WWW.PROLOC.COM.TR)



## P.22 | UNIVERSAL SILICONE

**CE**  
EN 15651-1  
EN 15651-3



One-component silicone sealant for a range of general sealing and glazing applications. It provides a strong adhesion and suitable for use on common non-porous building materials.

### PROPERTIES

Stays permanently elastic after curing. Remains flexible in low and high temperatures. Resistant to temperature extremes. Resistance to aging, cracking and discoloring.

### APPLICATIONS

Sealing around windows and doors. Sealing in DIY applications. On bathroom, kitchen and plumbing applications. Connection and expansion joints on glass, porcelain, steel etc. Sealing electric, telephone etc. sockets and switches.



### PACKAGE

Volume	Gw. 325g	310ml	300ml	80ml	50ml
Box	24	24	24	36	24/192

## P.24 | 100% SILICONE

**CE**  
EN 15651-1  
EN 15651-2  
EN 15651-3



Acetoxy cure, high performance, mold-proof silicone sealant designed for gap filling and sealing in a wide range of sanitary applications.

### PROPERTIES

100% Silicone, solventless. One component, moisture-cured. Highly Resistant to mold formation. Excellent primer less adhesion to numerous porous and non-porous substrates. Excellent weather ability in direct sunlight, rain, snow and ozone. Resistant to temperature extremes (-60 °C to +180 °C). Fast curing. Low modulus, high elasticity. Outstanding resistance to mildew and fungus. Does not crack or discolor. Withstands detergents, cleaning agents and chemicals. Acetoxy curing system.

### APPLICATIONS

Sealing of connection joints. Weather seal applications. Glazing works. Sanitary joints: Sealing applications in kitchens and bathrooms.



### PACKAGE

Volume	310ml
Box	24

## P.26 | MIRROR ADHESIVE

**CE**  
EN 15651-2



High performance neutral cure silicone which is particularly designed for bonding the mirrors in all kinds and sizes without harming mirrors. A bonded mirror is safer because there is no risk of large pieces of glass falling in the event of breakage.

### PROPERTIES

Highly elastic, +/-25% movement capability. Excellent primerless adhesion to numerous porous and non-porous substrates. Safer mirror construction with non-corrosive properties. Permanently elastic. Fast curing. 100% Silicone. Solvent free, very low odor. Adjustable, easy to apply. High viscosity non slump formula. One component moisture-cured. Excellent tooling propertie. Resistant to temperature extremes (-60 °C to +180 °C).

### APPLICATIONS

For fixing and bonding of mirrors in some places such as fitness centers, restaurants, cafes, hotels, and offices where mirror wall is required. For glazing works. Sealing applications where a low odor is required.



### PACKAGE

Volume	310ml
Box	24

## P.28 | AQUARIUM SILICONE

CE  
EN 15651-1  
EN 15651-2



- Non-toxic, solvent-free silicone sealant for use in aquarium construction and glazing applications. It's a high-quality acetic curing system based silicone sealant featuring excellent adhesion to glass and many other non-porous surfaces.

### PROPERTIES

100% silicone. Very good bonding strength. Rapid curing. Non-toxic to fish. One component, cures with atmospheric moisture. Keep its elasticity at low and high temperatures. Does not crack, discolour or shrink. Resistant to many chemicals. Resistant to UV radiation.

### APPLICATIONS

Bonding, sealing and repairing of aquariums.



### PACKAGE

Volume	310ml	280ml
Box	24	24

## P.30 | GASKET MAKER



- High-performance silicone sealant developed for sealing, bonding and repairing works where heat resistance is required. It is an ideal sealant for high temperature construction applications. It reacts with atmospheric moisture to produce a tough, elastic silicone.

### PROPERTIES

Excellent heat resistance after curing up to 250 °C permanently and up to 300 °C temporarily. Acetoxy cure, RTV silicone. 100% silicone. Fast cure, high strength. Resists to mechanical enforcement after curing. Remains flexible at low (-40 °C) and high (+250 °C) temperatures. Does not crack, shrink or become brittle. One component.

### APPLICATIONS

Sealing and bonding applications in automobiles. On heating systems and ovens for sealing/tightness. Sealing and bonding in stoves. In heating devices. Gaskets in pumps and motors. In sealing chimneys. Other bonding and sealing applications where parts must perform at high temperatures.



### PACKAGE

Volume	310ml	85gr	50gr	80ml
Box	24	20	24	36

## P.32 | NEUTRAL SILICONE

CE  
EN 15651-1  
EN 15651-2



- A neutral cure, high performance silicone sealant designed for gap filling and sealing in a wide range of use in building and construction. It combines the advantages of outstanding adhesion to building materials with its non-corrosive and odorless curing.

### PROPERTIES

100% solventless silicone. Excellent weatherproof and UV resistant. No Cracking or Shrinking. Water resistant. Very low odor and noncorrosive. Excellent flexibility and adhesion to numerous porous and non-porous. Substrates for large scale construction and glazing applications. Resistant to temperature extremes (-60 °C to +180 °C). Fast curing, low modulus, high elasticity. High viscosity non slump formula.

### APPLICATIONS

Non-corrosive joint sealing for walls, windows and doors. Glass to glass and glass to aluminium sealing. Sealing applications in kitchens and bathrooms. Sealing of connection joints in building industry (brick, wall, concrete, PVC, wood, glass etc.)



### PACKAGE

Volume	310ml	600 ml
Box	24	12

## P.33S | IG SILICONE SEALANT

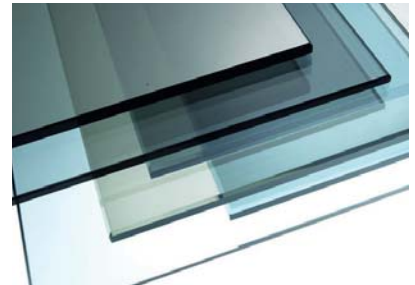
- One-part silicone sealant developed for use as a secondary sealant in a dual-sealed insulating glass unit. Insulating glass sealant can bond the individual components, forming a weather-resistant unit.

### PROPERTIES

Excellent unprimed adhesion to glass and metal substrates, such as galvanized steel, stainless steel. Single-component formulation minimizes waste and downtime by eliminating base purging and static mixer maintenance. Consistently non-slump, permitting automated glazing. Non-corrosive by products. Almost odorless fast curing formula. Resistant to temperature extremes (-60 °C to +180 °C).

### APPLICATIONS

Primarily used as a secondary sealant in production of dual-sealed insulating glass unit production. Insulating glass silicone sealant can be also recommended with insulating glass units incorporating specialty glass types.



### PACKAGE

Volume	600 ml
Box	36



## P.35 | PU SEALANT CONSTRUCTION

- One-component, low-modulus polyurethane sealant that cures on exposure to atmospheric humidity. It possesses excellent adhesion to all typical construction materials such as cement based materials, brick, ceramic, glass, wood, galvanized and painted sheet iron and various plastics.

### PROPERTIES

Possesses permanent elasticity. No sagging – Thixotropic. No surface tackiness after full cure. Does not pick up dirt. No shrinkage. Enhanced storage stability. Can be applied with hand gun and tooled easily. Paintable. Cures bubble-free. 25 % movement capability. Conforms to BS 6920 for the metallic water soluble impurities and is suitable for use in drinking water system. Conforms to the requirements of VOC content specifications in LEED credit EQc4.1 "Low-emitting products" of SCAQMD rule 1168.

### APPLICATIONS

Expansion joints between many different construction materials. Bonding of roof tiles. Installation of PVC window frames. Connection joints between wood window- and doorframes and walls. Joints between prefabricated construction materials. Sealing and bonding of ventilation ducts, gutters and spouts etc. For expansion joints between pre-cast concrete panels.



### PACKAGE

Volume	310 ml	600 ml
Box	12	20



EN 15651-1  
EN 15651-4



## P.36 | ACRYLIC SEALANT

- One-component universal acrylic sealant suitable for filling cracks and joints both indoors and outdoors. It's a cost-effective plastic-elastic sealant ideal for particularly static joints.

### PROPERTIES

Over paintable. Can be used on all porous surfaces such as brick, concrete, wood etc. Very easy to apply and clean. Water-proof after curing. No odour.

### APPLICATIONS

Sealing of low movement joints between various construction materials (wood, concrete, brick etc.) Filling cracks in walls and on ceilings. Sealing joints between windows, walls, doors etc.



### PACKAGE

Volume	310 ml
Box	24



EN 15651-1





## P.37 | SILICONIZED ACRYLIC SEALANT

CE  
EN 15651-1



- ① One-component acrylic emulsion based sealant reinforced with silicone emulsion. It has superior adhesion and good elasticity.
- ② PROPERTIES  
Can be used on all porous surfaces such as brick, concrete wood etc. Very easy to apply and clean. Water-proof after curing. Over paintable. No odour.
- ③ APPLICATIONS  
Sealing of low and medium movement joints between various construction materials (wood, concrete, brick etc.) Sealing joints between windows, walls, doors etc. Filling cracks in walls and on ceilings.



### PACKAGE

Volume	310 ml	600 ml	80 ml
Box	24	12	36

## P.38 | BITUMEN SEALANT



- ① Solvent-based plasto-elastic bituminous sealant, reinforced by fibres, for gluing and reparations on bituminous surfaces. After curing a permanent flexible mass is formed.
- ② PROPERTIES  
Immediate and permanent adhesion on all common construction materials (such as brick, concrete, lead, zinc, tiles, isolation panels, certain plastics, etc...) Can be applied under humid conditions. It is thixotropic and therefore cannot drip, flow or spill and makes no threads. Free from asbestos. Remains flexible after processing and vulcanization. Resistant to moisture. Economic in use. Inflammable (when used properly). Highly insulating. Protects against rust and moisture.
- ③ APPLICATIONS  
Waterproof sealing of joints, seams, chimneys, ventilation tubes, drainpipes, etc. Adhesive for synthetic materials, tiles, concrete, rubber, insulating panels etc. Sealing seams in wooden ships or boats.



### PACKAGE

Volume	310 ml
Box	24

## P.45 | PU SEALANT AUTOMOTIVE

CE  
EN 15651-1  
EN 15651-2



- ① One-component, high-modulus polyurethane sealant that cures on exposure to atmospheric humidity. It possesses excellent adhesion to sheet iron, aluminum, stainless steel, lead, copper, ceramic, glass, wood and various plastic materials.
- ② PROPERTIES  
Permanently flexible. Non-sag consistency - Exceptional thixotropy. Non-sticky / does not pick up dirt. No change in volume - No shrinkage. Improved storage stability. Easy to gun, can be easily smoothed. Over-paintable.
- ③ APPLICATIONS  
Body construction of cars, containers, caravans etc. Sealing and bonding of ventilation ducts, gutters and spouts etc. Sealing of sheet metal seams. For vibration reduction in all type of sheet metal assembly works. Sealing against water, air, gas and dust.



### PACKAGE

Volume	310 ml	280 ml	60 ml
Box	12	12	12



## P.49 | PU SEALANT FAST CURE



CE  
EN 15651-1



One-component, high modulus multipurpose elastic adhesive and joint sealant with outstanding application properties that bonds and seals most construction and industrial material substrates. It's designed for indoor and outdoor applications.

### PROPERTIES

Permanently flexible. Non-sag consistency - Exceptional thixotropy. Non-sticky / does not pick up dirt. No change in volume – No shrinkage. Easy to gun, can be easily smoothed. Over-paintable.

### APPLICATIONS

Body construction of cars, containers, caravans etc. Sealing of sheet metal seams, For vibration reduction in all type of sheet metal assembly works. Sealing and bonding applications in the manufacturing and construction industries. Sealing applications including concrete flooring joints. Bonding applications of window sills, thresholds, steps, boards, prefabricated elements. Joint sealant in concrete, metal and wood constructions. Multipurpose adhesive for indoor and outdoor bonding.



### PACKAGE

Volume	310 ml	280 ml	60 ml
Box	12	12	12

## P.50 | HYBRID SEALANT AUTOMOTIVE



CE  
EN 15651-1



High performance hybrid adhesive & sealant designed for a wide range of bonding and sealing applications. In contrast to PU sealants, it does not foam or bubble when applied in high humidity conditions.

### PROPERTIES

Suitable for interior and exterior use. Immediate high grab strength. Solvent free and isocyanate free. Environmentally friendly. Overpaintable. UV resistant. Excellent mechanical properties. Non gassing: will not bubble. Non-dirt pick up. Permanently elastic. No shrinkage.

### APPLICATIONS

Body construction of cars, caravans and containers. Sealing of floor joints. Universal gap filling bonding applications. Sealing and bonding of ventilation ducts, gutters and spouts etc.. Sealing of sheet metal seams. Assembling curtain walls and side walls. For vibration reduction in all type of sheet metal assembly works.



### PACKAGE

Volume	300 ml	600 ml
Box	12	20

## P.60 | FLEXIBLE HYBRID POLYMER



CE  
EN 15651-1  
EN 15651-2



Neutral, elastic, single component AST based joint sealant. It is a low modulus sealant suitable for both indoor and outdoor applications.

### PROPERTIES

Highly thixotropic: Suitable for horizontal and vertical joints. Low modulus - can withstand extreme joint movement. Does not contain solvent, silicone or isocyanate. High bond strength on nearly all surfaces. Primer less adhesion on many different substrates. No bubble formation, even in wet and humid conditions. Very good UV resistance. Over-paintable with water based paints. No shrinkage. Conforms to the requirements of VOC content specifications in LEED credit EQc4.1 "Low-emitting products" of SCAQMD rule 1168.

### APPLICATIONS

Expansion and connection joints in the building industry. Sealing of joints in prefabricated buildings. Movement joints in high rise constructions. Sealing between window and door frames. Where joints have to be painted.



### PACKAGE

Volume	290 ml	400 ml	600 ml
Box	12	12	12

## P.61 | CLEAR HYBRID POLYMER



EN 15651-1  
EN 15651-2



- Crystal clear elastic adhesive based on AST polymer.

### PROPERTIES

Clear, transparent color. Highly thixotropic: Suitable for horizontal and vertical application. Does not contain solvent, silicone or isocyanate. High bond strength on nearly all surfaces. Primerless adhesion on many different substrates. No bubble formation, even in wet and humid conditions. Does not need primer (preliminary test recommended). Over-paintable with water based paints. No shrinkage. Conforms to the requirements of VOC content specifications in LEED credit EQc4.1 "Low-emitting products" of SCAQMD rule 1168.

### APPLICATIONS

It has a good adhesive strength without primer on most common materials such as aluminum, zinc, galvanized steel, stainless steel, copper, natural stone, concrete, brick, etc. Common application areas are: Transparent and elastic bonding in construction and building applications. Invisible bonding and sealing of glass and other transparent materials in indoor applications.



### PACKAGE

Volume	290 ml	400 ml	600 ml
Box	12	12	12

## P.62 | MULTI PURPOSE HYBRID POLYMER



EN 15651-1  
EN 15651-2



- High quality universal hybrid sealant & adhesive based on AST polymer.

### PROPERTIES

Highly thixotropic: Suitable for horizontal and vertical joints. Does not contain solvent, silicone or isocyanate. High bond strength on nearly all surfaces. Primer less adhesion on many different substrates. No bubble formation, even in wet and humid conditions. Very good UV resistance. Over-paintable with water based paints. No shrinkage. Conforms to the requirements of VOC content specifications in LEED credit EQc4.1 "Low-emitting products" of SCAQMD rule 1168. Conforms to A+ VOC emission label.

### APPLICATIONS

Connection joints in sheet metal fabrication, sealing of air conditioning systems. Elastic bonding in vibrating constructions. Sealing of floor joints and low movement wall joints. Sealing joints in containers, cisterns, silos etc.



### PACKAGE

Volume	290 ml	400 ml	600 ml
Box	12	12	12

## P.63 | HIGH TACK



EN 15651-1  
EN 15651-2



- AST polymer-based, one component, high quality and professional adhesive with high adhesive strength and initial tack. It is suitable for bonding heavy building materials without the use of clamps and/or fixing tape.

### PROPERTIES

Waterproof. Free from solvent and odorless. One Component. Over-paintable. No bubble formation. No shrinkage. Does not need primer (preliminary test recommended). Excellent elasticity and very good adhesion strength. Does not contain solvent, silicone or isocyanate. Conforms to the requirements of VOC content specifications in LEED credit EQc4.1 "Low-emitting products" of SCAQMD rule 1168.

### APPLICATIONS

It is specially developed as a universal adhesive for bonding various building materials. It is suitable for elastic bonding of panels, profiles and other pieces on the most common substrates such as: stone, concrete, mirrors, glass, plasterboard, PU, PVC, polyester, plastics, enamel, ceramic, copper, lead, zinc, aluminium, metals, R.V.S., wood, HPL and cement fibre panels etc. Common application areas are: Wall cladding elements and ceiling panels. Sound isolation panels (mineral wool, wood-wool cement & plastic foams).



### PACKAGE

Volume	290 ml	400 ml	600 ml
Box	12	12	12

## P.64 | POWER HYBRID POLYMER

CE  
EN 15651-1



AST polymer-based, one component, hybrid joint-filling sealant with very high built-up of strength. It does not contain solvent or isocyanate and can be applied for multi purposes can be applied as a multi purpose adhesive and sealant.

### PROPERTIES

Very high final strength. Waterproof; becomes elastic and soft with air humidity. Free from solvent and odorless. One Component. Over-paintable. No bubble formation. No shrinkage. Does not need primer (preliminary test recommended). Excellent elasticity and very good adhesion strength. Does not contain solvent, silicone or isocyanate. Conforms to the requirements of VOC content specifications in LEED credit EQc4.1 "Low-emitting products" of SCAQMD rule 1168.

### APPLICATIONS

Sealing and bonding of the most common substrates such as natural stone, hard PVC, concrete, wood, glass, metals etc.



### PACKAGE

Volume	290 ml	400 ml	600 ml
Box	12	12	12

## P.66 | DECK CAULK HYBRID POLYMER

CE  
EN 15651-1



Deck Caulk is a one component AST polymer based hybrid joint sealant specially developed for joints in marine decking.

### PROPERTIES

Chemically resistant to fresh water, salt water and diluted acids, UV, ageing, moisture and extreme weather resistance. Ecofriendly, free from isocyanate, solvent, acids and halogens. Highly elastic in low and high temperatures, Excellent primerless adhesion to numerous porous and non-porous substrates, Sandable after curing, Fast curing, low odor and non-sag properties.

### APPLICATIONS

Designed for sealing of connection joints between teak decks and variety of decking substrates. Outstanding primerless adhesion on joining elements made from wood, concrete, plastic, steel, aluminum, zinc, copper, porcelain, ceramics, PVC, metals, polyester, polycarbonate, natural stone, marble, mirror, glass and porous surfaces. If using for the first time a preliminary test is recommended for plastics before application.



### PACKAGE

Volume	290 ml	600 ml
Box	12	12

## P.72 | LMN SILICONE

CE  
EN 15651-1



Neutral cure, silicone sealant, exclusively created for glazing and weather - sealing between door and window frames connected to plaster. It forms highly resistive weatherproof seal on windows and building facades. It is also suitable for sealing applications on the surfaces where acetoxy silicone is not desired.

### PROPERTIES

Provides permanent elasticity. Outstanding adhesion to many porous and non-porous substrates. Exceptional resistance to temperature extremes. Very low odor and non-corrosive to metals. Excellent UV resistance. Not affected by exposure to sunlight, rain, snow and maintains it over many years. Excellent flexibility. Fast curing, low modulus, high elasticity. High viscosity non slump formula.

### APPLICATIONS

Premium weather sealing and joint sealing for walls, windows and doors. Sealing and mounting window and door frames. Sealing applications of marble, stone and other porous substrates. Vent and HVAC ducts systems. Outstanding primerless adhesion on joining elements made from brick, stone, concrete, wooden, plastic, steel, aluminum, zinc, porcelain, ceramic, PVC, metal profiles, glass and porous surfaces. Preliminary test is recommended for some plastics if necessary.



### PACKAGE

Volume	290 ml	600 ml
Box	12	12



## P.82 | FIRE STOP ACRYLIC SEALANT



More than 4 hours  
fire resistance  
according to  
EN 1366-4



- Single component water based fire rated acrylic sealant ideal for sealing joints to prevent the passage of flammable gases and toxic smoke in compartment walls and floors.

### PROPERTIES

M1 Fire Rating according to NF P 92-501 radiation test. Good unprimed adhesion to most common construction substrates. Easy to apply. Remains flexible. Paintable. Non-slump.

### APPLICATIONS

Sealing of joints and seams, or at certain areas where requirements for fire resistance are mandatory.



### PACKAGE

Volume	310 ml	400 ml	600 ml	Br. 550 g.
Box	12	12	12	12

## P.84 | POLYURETHANE SEALANT CONSTRUCTION



- One-component, high-modulus polyurethane sealant that cures on exposure to atmospheric humidity. It possesses excellent adhesion to sheet iron, aluminum, stainless steel, lead, copper, ceramic, wood etc.

### PROPERTIES

Permanently flexible. Non-sag consistency-Exceptionally thixotropic. Non - sticky / does not pick up dirt. No change in volume. Easy to gun, can be easily smoothed. Over - paintable. The requirements of VOC content specifications in LEED credit EQc4.1 "Low-emitting products" of SCAQMD rule 1168.

### APPLICATIONS

Body construction of cars, containers, caravans etc. Sealing and bonding of ventilation ducts, gutters and spouts etc. Sealing of sheet metal seams. For vibration reduction in all type of sheet metal assembly works. Sealing against water, air, gas and dust.



### PACKAGE

Volume	290 ml	600 ml
Box	12	12

## P.85 | BUTYL SEALANT



- One component sealant based on polybutene that provides an effective weatherproof seal in a variety of exterior and interior applications.

### PROPERTIES

Adheres to most common building surfaces. High solids formulation - excellent gap filling properties without shrinkage. Good external weathering properties.

### APPLICATIONS

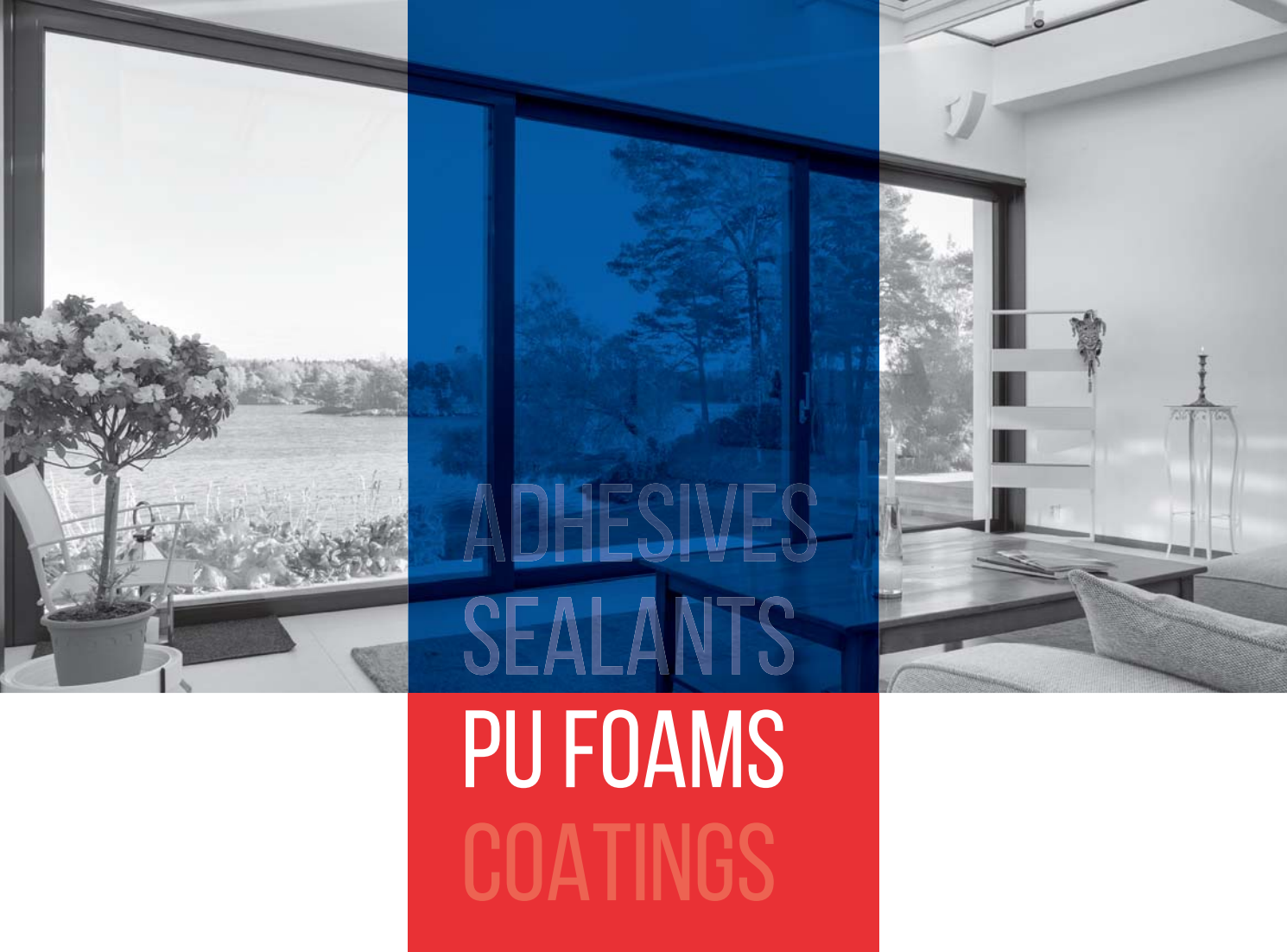
Sealing metal roof panels. Pointing around soft and hardwood timber, metal and concrete/stone window and door frames. Sealing metal panels in car bodies and containers. Sealing pre-cast concrete panels. Sealing timber sections to brick, stone and concrete; ideal for roofline applications. Sealing gaps and cracks in brickwork and stone.



### PACKAGE

Volume	310 ml	600 ml
Box	12	12





[WWW.PROLOC.COM.TR](http://WWW.PROLOC.COM.TR)

## P.10 | MULTI PURPOSE PU FOAM



- Single-component, moisture-curing and self-expanding aerosol polyurethane foam. It is designed for easy dispensing through the straw adapter included with each can. It does not contain any propellant gases that are harmful to the ozone layer.

### PROPERTIES

Excellent adhesion & filling capacity and high thermal & acoustical insulation value. Excellent mounting capacity and stability. Adheres to almost all building materials with the exception of surfaces such as polyethylene, Teflon, silicone and surfaces contaminated with oils and greases, mold release agents and similar materials. Mould-proof, water-proof, over paintable. Cured foam dries rigid and can be trimmed, shaped and sanded.

### APPLICATIONS

Fixing and insulating of door and window frames. Filling and sealing gaps, joints and cavities. Filling of penetrations in walls. Insulating electrical outlets and water pipes.



### PACKAGE

Volume	GW. 850 g.
Box	12

## P.11 | MULTI PURPOSE PU FOAM (-12°C)



- Single-component, moisture-curing and self-expanding PU foam especially developed for applications at temperatures of as low as -12 °C.

### PROPERTIES

High yield & stability and adequate pressure at frost temperatures. Excellent adhesion on most materials. Very good filling capacity. High thermal & acoustical insulation value. Resistant to moisture, heat, water and many chemicals.

### APPLICATIONS

Mounting and insulating of door and window frames. Filling and sealing of gaps, joints and cavities. Filling of penetrations in walls and improving thermal isolation in cooling systems.



### PACKAGE

Volume	GW. 850 g.
Box	12

## P.12 | MULTI PURPOSE PU GUN FOAM



- Single-component PU foam used with an applicator gun and features higher yield, easier application and reusability. It does not contain any propellant gases which are harmful to the ozone layer.

### PROPERTIES

Excellent adhesion & filling capacity and high thermal & acoustical insulation value. Economical consumption thanks to precise application. High yield up to 45 liters depending on temperature and humidity. Conforms to fire class B3 according to DIN 4102-1. Mould-proof, water-proof and over paintable.

### APPLICATIONS

Fixing and insulating of door and window frames. Filling and sealing of gaps, joints and cavities. Filling of penetrations in walls. Insulating electrical outlets and water pipes.



### PACKAGE

Volume	GW. 850 g.
Box	12

## P.13 | MULTIPURPOSE PU GUN FOAM (-12°C)



- Single-component PU foam used with an applicator gun and developed for applications in temperatures below to -12 °C.

- PROPERTIES**  
Can be applied at frost temperatures. Excellent adhesion & filling capacity and high thermal & acoustical insulation value. Economical consumption thanks to precise application. High yield up to 45 liters. Conforms to fire class B3 according to DIN 4102-1. Mould-proof, water-proof and over paintable.

- APPLICATIONS**  
Fixing and insulating of door and window frames. Filling and sealing of gaps, joints and cavities. Filling of penetrations in walls. Insulating electrical outlets and water pipes.



### PACKAGE

Volume	GW. 850 g.
Box	12

## P.14 | MEGA PU GUN FOAM 70L



- Single-component professional PU foam which yields significantly higher volumes. It is used with applicator gun.

- PROPERTIES**  
High yield up to 70 liters, depending on the humidity and temperature. Excellent adhesion on common construction materials. Economical consumption thanks to precise application. Conforms to fire class B3 according to DIN 4102-1. Mould-proof, water-proof and over paintable. It does not contain any propellant gases which are harmful to the ozone layer.

- APPLICATIONS**  
Fixing and insulating of door and window frames. Filling and sealing of gaps, joints and cavities. Filling of penetrations in walls. Insulating electrical outlets and water pipes.



### PACKAGE

Volume	GW. 1000 g.
Box	12

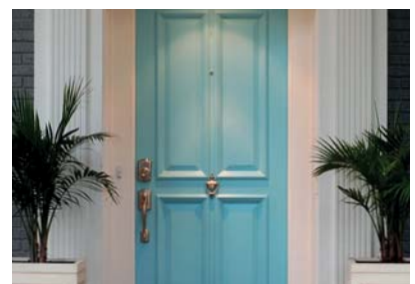
## P.15 | MEGA PU GUN FOAM 70L (-12°C)



- Single-component professional PU foam which yields significantly higher volumes. It is used with applicator gun.

- PROPERTIES**  
High yield up to 70 liters, depending on the humidity and temperature. Can be applied at low temperatures below to -12°C. Excellent adhesion on common construction materials. Economical consumption thanks to precise application. Conforms to fire class B3 according to DIN 4102-1. Mould-proof, water-proof and over paintable. It does not contain any propellant gases which are harmful to the ozone layer.

- APPLICATIONS**  
Fixing and insulating of door and window frames. Filling and sealing of gaps, joints and cavities. Filling of penetrations in walls. Insulating electrical outlets and water pipes.



### PACKAGE

Volume	1020 g.
Box	12



## P.16 | MEGA PU GUN FOAM 70L (-25°C)



- Single-component professional PU foam which yields significantly higher volumes. It is used with applicator gun.

### PROPERTIES

High yield up to 70 liters, depending on the humidity and temperature. Can be applied at low temperatures below to -25°C. Excellent adhesion on common construction materials. Economical consumption thanks to precise application. Conforms to fire class B3 according to DIN 4102-1. Mould-proof, water-proof and over paintable. It does not contain any propellant gases which are harmful to the ozone layer.

### APPLICATIONS

Fixing and insulating of door and window frames. Filling and sealing of gaps, joints and cavities. Filling of penetrations in walls. Insulating electrical outlets and water pipes.



### PACKAGE

Volume	1020 g.
Box	12

## P.18 | PU ADHESIVE GUN FOAM



- One component aerosol polyurethane adhesive foam curing swiftly with moisture. Providing very fast and powerful adhesion for various construction materials, especially highly recommended for heat insulation systems.

### PROPERTIES

Powerful adhesion of polystyrene heat panels (XPS and EPS). Ready to mechanical fastening in two hours. More economical. Ready to use in aerosol can. Up to 14m² heat insulation panel adhesion for each can. Minimum expansion during drying period. After dried, no further expansion and shrinkage. A lighter material compared to plaster which used in heat insulation systems. No more extra burden or weight to building. Depending on the humidity and temperature.

### APPLICATIONS

Best for mounting heat insulation panels and filling voids during adhesive application. Also advised for wooden type construction material bonding to concrete, metal etc. Applications needed minimum expansion. Mounting and isolation for frames of windows and doors.



### PACKAGE

Volume	Gw.850gr
Box	12

## P.110 | INSULATION SPRAY FOAM



- high quality heat and sound insulation product for buildings and houses. Provides a unique, monolithic thermal insulation application without junctures, seams and gaps. An innovative alternative to traditional building insulation methods such as polystyrene heat insulation boards, glass wool and rock wool. Single-component product used with an applicator gun. It does not contain any propellant gases which are harmful to the ozone layer.

### PROPERTIES

Excellent adhesion to all kind of building materials. Can be applied easily to uneven, hard to reach surfaces where it is not possible to use traditional insulation materials. Excellent thermal insulation value (0.025 W/(m.K). Elimination of thermal bridges. Elimination of the dew point. (\*)Yield up to 3m² with 1.5cm thickness for one layer if applied from a distance of ~40cm with normal application speed. No need to use mechanical fastening elements after use. Over paintable.

### APPLICATIONS

Roofs, attics, facades, foundations, basements, floors, interior walls, inter-floor overlappings, interior partitions, ceilings and cellars. Structural elements of buildings, balcony, loggia, doors, window slopes, pipes, canals and tank kind round surfaces, uneven and rough all surfaces, Car body and car trailers, boats, yachts, vessels and all kind of sea vehicles.



### PACKAGE

Volume	Gw. 850 ml / 930gr
Box	12



## P.19 | SAFETY VALVE PU FOAM



☑ PU foam which is never blocked thanks to its mechanical valve.

### PROPERTIES

Reusability: Can be re-used repeatedly even if partially used before. Even stored in horizontal or upside-down position the valve is never blocked. Better control of the outflow thanks to special adaptor. High horizontal yield thanks to special design tube. Mould-proof, water-proof and over paintable. It does not contain any propellant gases which are harmful to the ozone layer.

### APPLICATIONS

Fixing and insulating of door and window frames. Filling and sealing of gaps, joints and cavities. Filling of penetrations in walls. Insulating electrical outlets and water pipes.



### PACKAGE

Volume	Gw.850gr
Box	12

## P.20 | B1 FIRE RATED STRAW PU FOAM



Up to 217 minutes fire resistance according to EN 1366-4



☑ One component, moisture curing, self expanding, ready to use polyurethane foam with propellants which are completely harmless to ozone layer. It has a fire rating of up to 217 minutes in certain configurations. High quality PU straw foam recommended for sealing applications where fire resistance is required. It is designed for easy dispensing through the straw adapter included with each can.

### PROPERTIES

According to EN 1366-4 fire retardant up to 217 min. Efficient seal against smoke and gas. Does not contain CFC's and H-CFC's. Excellent adhesion & filling capacity. Excellent mounting capacity and stability. High yield up to 45 liters depending on temperature and humidity. Excellent adhesion on most substrates (except Teflon, PE and PP). High filling capacity. High thermal & acoustical insulation value. After cured, it can be painted, cut, trimmed. No shrinkage. Mould and water resistant. Conforms to fire class B1 (DIN 4102).

### APPLICATIONS

All applications where fire retardant properties are required such as: Installation of door and window frames. Filling and sealing gaps, joints and cavities. Filling of penetrations in walls. Heat insulation of roof construction. Sealing of cable and pipe penetrations. Soundproofing and sealing partition walls. Bonding of insulation materials. Multi-Purpose, adhesion and fixation.



### PACKAGE

Volume	Gw.850gr
Box	12

## P.20P | B1 FIRE RATED PU GUN FOAM



Up to 217 minutes fire resistance according to EN 1366-4



☑ Single component, moisture curing, self-expanding, ready to use polyurethane foam with propellants which are completely harmless to ozone layer. It has a fire rating of up to 217 minutes in certain configurations.

### PROPERTIES

According to EN 1366-4 fire retardant up to 217 min. Efficient seal against smoke and gas. Does not contain CFC's and H-CFC's. Excellent adhesion & filling capacity. Excellent mounting capacity and stability. High yield up to 65 liters depending on temperature and humidity. Excellent adhesion on most substrates (except Teflon, PE and PP). High filling capacity. High thermal & acoustical insulation value. After cured, it can be painted, cut, trimmed.

### APPLICATIONS

Installation of door and window frames. Filling and sealing gaps, joints and cavities. Filling of penetrations in walls. Heat insulation of roof construction. Sealing of cable and pipe penetrations. Soundproofing and sealing partition walls. Bonding of insulation materials. Multi-Purpose, adhesion and fixation.



### PACKAGE

Volume	Gw.850gr
Box	12

## P.21 | B2 FIRE RATED STRAW PU FOAM



Self-extinguishable aerosol polyurethane foam for filling, sealing and bonding gaps. It is designed for easy dispensing through the straw adapter included to each can.

### PROPERTIES

Rated B2 according to DIN 4102. Excellent adhesion to most building materials. It does not contain any propellant gases that are harmful to the ozone layer. It can be painted after curing. It can be cut and sawn.

### APPLICATIONS

Fixing and insulating of door and window frames. Filling and sealing of gaps, joints and cavities. Filling of penetrations in walls. Insulating electrical outlets and water pipes.



### PACKAGE

Volume	Gw.850gr
Box	12

## P.21P | B2 FIRE RATED PU GUN FOAM



Self-extinguishable aerosol polyurethane foam for filling, sealing and bonding gaps. PU foam used with an applicator gun and features higher yield, easier application and reusability.

### PROPERTIES

Rated B2 according to DIN 4102. Excellent adhesion to most building materials. It does not contain any propellant gases that are harmful to the ozone layer. It can be painted after curing. It can be cut and sawn.

### APPLICATIONS

Fixing and insulating of door and window frames. Filling and sealing of gaps, joints and cavities. Filling of penetrations in walls. Insulating electrical outlets and water pipes.



### PACKAGE

Volume	Gw.850gr
Box	12

## P.102 | DOOR & WINDOW PU FOAM



Single-component, moisture-curing and self-expanding aerosol polyurethane foam. It is designed for easy dispensing through the straw adapter included with each can. It does not contain any propellant gases that are harmful to the ozone layer.

### PROPERTIES

Excellent adhesion & filling capacity and high thermal & acoustical insulation value. Excellent mounting capacity and stability. Adheres to almost all building materials with the exception of surfaces such as polyethylene, teflon, silicone and surfaces contaminated with oils and greases, mold release agents and similar materials. Mould-proof, water-proof, over paintable. Cured foam dries rigid and can be trimmed, shaped and sanded.

### APPLICATIONS

Fixing and insulating of door and window frames. Filling and sealing gaps, joints and cavities. Filling of penetrations in walls. Insulating electrical outlets and water pipes.



### PACKAGE

Volume	Gw.850gr
Box	12

## P.05 | FOAM CLEANER



- Removes fresh PU foam and cleans the PU foam gun adapter after the application. Cleans surfaces, clothes, window & door frames and prevents the foam cure in the gun adapter.

### PROPERTIES

Powerful solvent based aerosol cleaner for removing uncured, PU foam (straw and gun adapter foam). Designed especially for cleaning the gun adapter of foam. Cleaner has a spray activator for removing the foam from the gun adapter. It can be used in all positions. Propellant gas is not harmful to the ozone layer.

### APPLICATIONS

Cleaning of the gun adapter. Cleaning of the valves of the PU Foam Aerosol. Removal of uncured foam.



### PACKAGE

Volume	500 ml
Box	12

## P.104P | ADHESIVE FAST FOAM



- Fast Curing Adhesive PU Foam is a professional type, gun grade, ready to use product. It is used for fast and strong bonding of all kinds of construction materials, especially thermal insulation boards. Within 60 seconds, initial adhesion occurs and adheres securely after 5 minutes.

### PROPERTIES

One component, fast curing, easy to use adhesive foam. 30-40% saves time, because it can be cured and applied quickly according to other insulating processes. It is 30-40% more economical than other insulation processes. Up to 14 m<sup>2</sup> heat insulation panel (EPS, XPS) adhesion for each can. Powerful adhesion to polystyrene heat insulating panels (XPS and EPS) and other construction materials. Provides initial adhesion within 60 seconds. It allows the connection of the heat insulating panels within an average of 30 minutes. Suitable to use at interior and exterior applications. Remarkable resistance to weather conditions. Usable at low temperature like -6 °C. It does not contain any propellant gases which are harmful to the ozone layer. Fire class B3 according to DIN 4102-1.

### APPLICATIONS

Mounting large insulation/finishing boards. Bonding structural blocks of non-bearing interior walls. For use where fixed, permanent positioning of stone or concrete products is desired. Mounting decorative elements. Concrete pavers/slabs. Segmental retaining walls and columns. Cast stone copings. Landscape blocks and bricks. Polystyrene foam boards. Cellular lightweight concrete elements. Ornamental precasts. Natural & manufactured stones. Brick, aerated block, cinder block, bims block, gypsum block and gypsum panel bonding. Applications where minimum expansion is needed.



### PACKAGE

Volume	Gw.850gr
Box	12

## P.17 | PU ADHESIVE FOAM (STRAW)



- One component aerosol polyurethane adhesive foam curing swiftly with moisture. Providing very fast and powerful adhesion for various construction materials, especially highly recommended for heat insulation systems.

### PROPERTIES

Powerful adhesion of polystyrene heat panels (XPS and EPS). Ready to mechanical fastening in two hours. More economical. Ready to use in aerosol can. Up to 9m<sup>2</sup> heat insulation panel adhesion for each can. Minimum expansion during drying period. After dried, no further expansion and shrinkage. A lighter material compared to plaster which used in heat insulation systems. No more extra burden or weight to building. Depending on the humidity and temperature.

### APPLICATIONS

Best for mounting heat insulation panels and filling voids during adhesive application. Also advised for wooden type construction material bonding to concrete, metal etc. Applications needed minimum expansion. Mounting and isolation for frames of windows and doors.



### PACKAGE

Volume	Gw.850gr
Box	12







[WWW.PROLOC.COM.TR](http://WWW.PROLOC.COM.TR)

## PP90 | 1K POLYURETHANE PRIMER



- ☑ Transparent, half-elastic, single component PU primer that penetrates to deep. A solvent-based product. It cures with the moisture of the surface and the humidity in the air.

### ☑ PROPERTIES

Excellent adhesion to absorbent surfaces. Highly elastic to meet surface movements. Easy application (by roller or airless gun). Resistant to accumulated water and frost. Economical in use.

### ☑ APPLICATIONS

It is used as a primer on absorbent surfaces like concrete, light concrete, cement, plaster, screed base, mortar, wood, especially before polyurethane based waterproofing materials and polyurethane sealants.



### ☑ PACKAGE

Volume	Net 15 kg	Net 5 kg	1kg
--------	-----------	----------	-----

## PM450 | POLYURETHANE WATERPROOFING MEMBRANE



- ☑ One part, easy to apply, specially formulated polyurethane based, elastic, crack bridging membrane. It cures to form a highly elastic, seamless, waterproof coating with excellent crack bridging properties. Its performance is maintained even at low temperatures.

### ☑ PROPERTIES

Excellent Adhesion. Easy application. May be applied interior and exterior areas. Crack Bridging. Highly elastic. Economical in use. Silk/matt appearance. Root penetration resistant

### ☑ APPLICATIONS

Seamless coating on roofs and concrete structures, which can also be used as a waterproofing membrane on non-trafficked areas. Not suitable for permanent water immersion. Can be applied on concrete, brickwork, asbestos cement, roof tiles, roofing felt etc. For areas with specific official performance requirements, please contact us for product selection.



### ☑ PACKAGE

Volume	Net 25 kg	Net 1 kg
Box	1	1

## JH1080 | 2K JOINT SEALANT POLYUREA



- ☑ Self-leveling, 100% solid, flexible, two component, 1:1 volumetric ratio, rapid curing polyurea elastomer joint and crack filler. Cures rapidly and consistently in applications ranging from -10°C to 50°C. Applications can be reopened to vehicle or foot traffic in 1 hour. Recommended time of cure of concrete minimum 30 days prior to installing joint filler or joint sealant.

### ☑ PROPERTIES

100% solid, VOC free, no solvents. Fast reactivity. Returns project to service in 60 Minutes. Temperature and moisture insensitivity. Excellent thermal stability. Very good tensile and structural strength. Resistant to petrochemicals and chemicals.

### ☑ APPLICATIONS

Concrete crack repair and joint filler on; Airports. Roofs. Parking lots and garages. Industrial facilities. Warehouse floors. Manufacturing facilities. Bottling and canning facilities. Food processing facilities. Cold storage facilities.



### ☑ PACKAGE

Volume	300+300 ml
Box	6 & 12

## ACRYLIC WATERPROOFING MEMBRANE



CE  
EN 1504-2

- Acrylic Waterproofing Membrane is a one component, water based, acrylic copolymer based elastic waterproofing membrane.

### PROPERTIES

Ready to use. Can be easily applied with airless spray gun, roller or brush. Low labor cost. Does not contain solvent, can be diluted with water. Water vapor permeable. Resistant to UV. Maintains elasticity even at low temperatures. Over paintable. High opacity. Can be colored with water based color pastes. Seamless application.

### APPLICATIONS

Waterproofing of; Balconies, terraces and roofs. Facades. Wooden surfaces. Asphalt and bitumen floorings. Roofing details such as gutters, chimney edges etc.



### PACKAGE

Volume	Net 5 kg	Net 20 kg
--------	----------	-----------

## HYBRID WATERPROOFING MEMBRANE



CE  
EN 1504-2

- Premium, liquid and cold applied, one-component silane modified polymer (SMP) based polymer, elastic, waterproofing membrane, free of bitumen, solvent and isocyanates. After fully cured, it forms waterproof, UV resistant surface which also repairs the cracks up to 5mm.

### PROPERTIES

Applicable also on damp surfaces. Good resistance to UV, water and moisture. Self-leveling. Paintable. Applicable by brush, roller or a spatula. Provides water vapor permeability, allowing the surface to breathe. Environmental friendly – Free of bitumen, isocyanates and solvents.

### APPLICATIONS

Protection, repair, restoration and waterproofing of the following surface and areas: Concrete floor slabs and roofs. Balconies and terraces. Small horizontal movement joints. As a flexible coating of roofs. Protection of Polyurethane Foam Insulation. Waterproofing of Wet Areas (under-tile) in bathrooms, kitchens, balconies, auxiliary rooms, etc.



### PACKAGE

Volume	1 kg	14 kg
--------	------	-------

## HM80 HAND MIX POLYUREA



- Hand mixable, self-leveling, 100% solids, flexible, two-component polyurea material. The product has a retarded reaction time (pot life) to permit 'hand mix' use. This superior material designed for joint and crack filling for concrete applications. It works well in adverse temperature conditions and reopen to vehicle and foot traffic just one hour after the application.

### PROPERTIES

100% solids, VOC Free. Hand mixable and applicable. Remains flexible in cold temperatures. Open to traffic in 60 minutes. Cures from -18 °C to 65 °C. Temperature and moisture insensitive.

### APPLICATIONS

Concrete crack and repair. Small repairs on existing polyurea coating. Concrete joint filler in; industrial floors, manufacturing facilities, cold storage facilities, airports and garages.



### PACKAGE

	A comp.	B comp.
Volume	2,2 kg	2 kg

## P.40 | LONG-TERM ANTI-RUST



- Corrosion inhibitor, lubricant and multi purpose protector aerosol spray. It's special formula combines many properties such as cleaning, lubricating, loosening rusted part, driving out moisture. It can be used in industrial, home and daily labours.

### PROPERTIES

Ultimate penetrating ability. Loosens rusted or corroded bolts, nuts, cables and any other fasteners. Greases and loosens door and window hinges, locks, and other fittings. Decreases frictions and stops squeaks of pedals, chairs, windows, faucets and hinges. Does not contain silicone and any dirt trap additives. Drives the moist out of the surface and dries it out thus provides longtime lubricating effect. Protects metal parts against rust. Provides maintenance by penetrating into surface and protects it against dirt. Dissolves tar, gum, adhesive etc. Permeates into grease and dirt and creates a protective film layer on the surface.

### APPLICATIONS

In all fittings, door and window mechanisms, locks, handles, hinges. For annulling humidity on metallic surfaces of bikes, motorbikes, small motor vehicles, electronic contacts and other home tools such as drills, jigsaws, etc. For loosening and activating rusted and jammed mechanisms. Can be used as protective on surfaces vulnerable to water and rust. For dissolving adhesive materials like tar, gum, adhesive tapes etc. Can be used for cleaning and maintenance of weapons.



### PACKAGE

Volume	200 ml	400 ml
Box	24/96	24/48





 |  PROLOCSEALANT

---

WWW.PROLOC.COM.TR  
INFO@PROLOC.COM.TR



WWW.PROLOC.COM.TR

INFO@PROLOC.COM.TR